

# SPECIFICATION SHEET

## Sahara 1800mm 4 Drawer Wall Vanity

Code: 10266

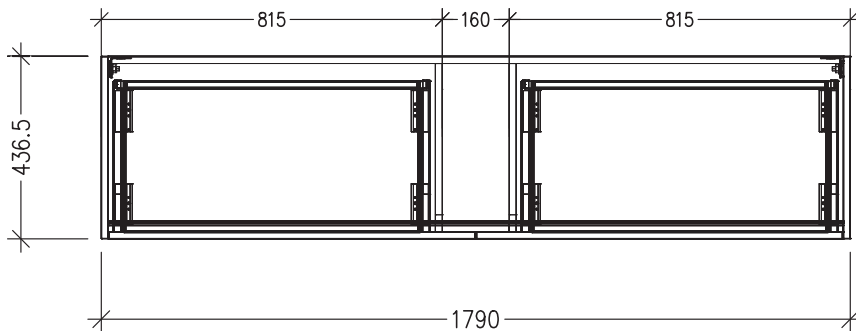


### Features

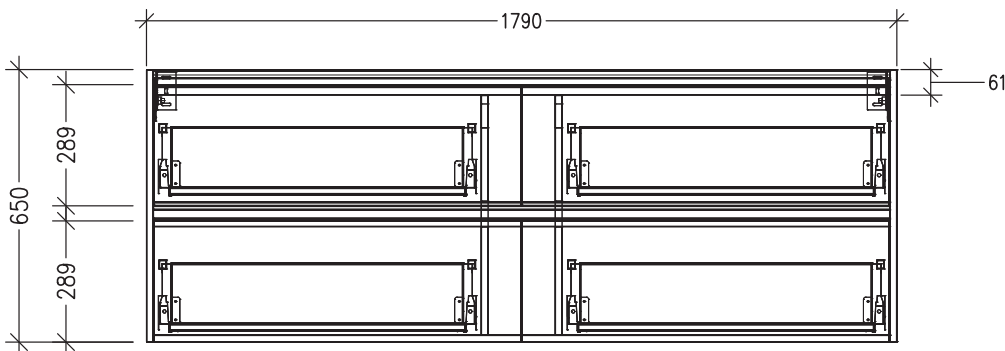
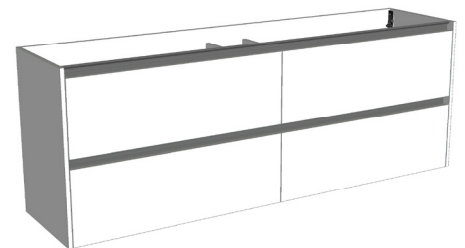
- 4 Drawer Wall Hung
- Cabinet with Extrusion
- Centre Basin
- Dimensions: H670 x W1800 x D465
- Designed & Assembled in NZ

### Technical Details

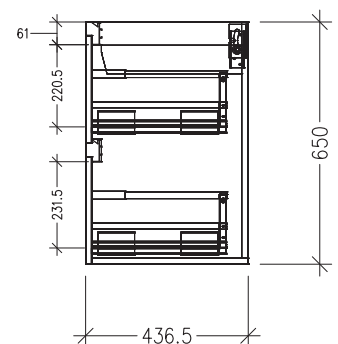
Note: All measurements shown are in millimetres. Sizes are nominal.



TOP VIEW



FRONT VIEW

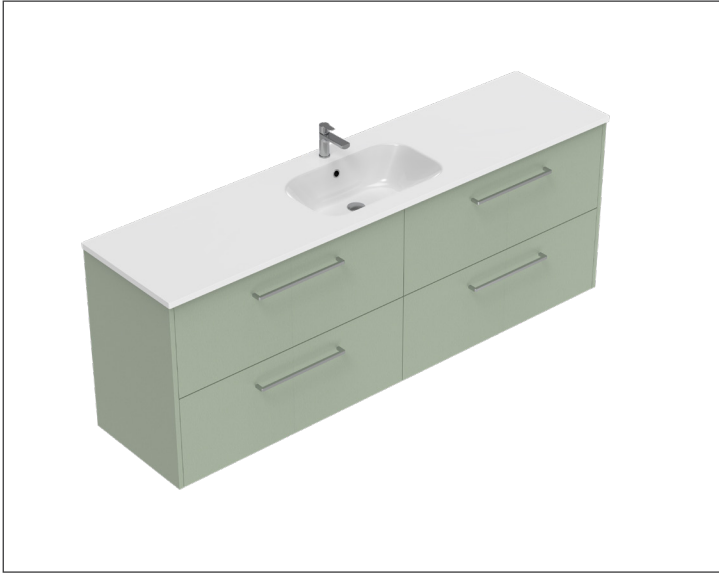


SIDE VIEW

# SPECIFICATION SHEET

## Sahara 1800mm 4 Drawer Wall Vanity

Code: 10266

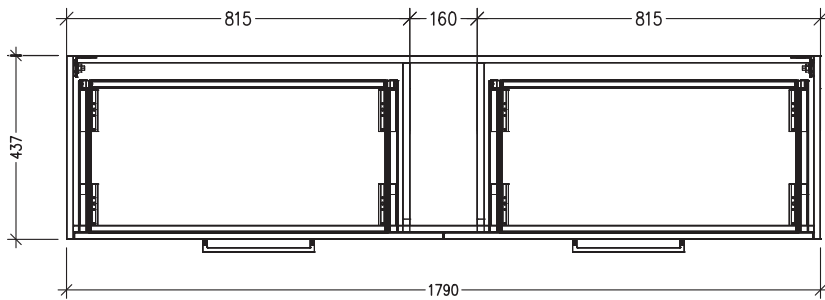


### Features

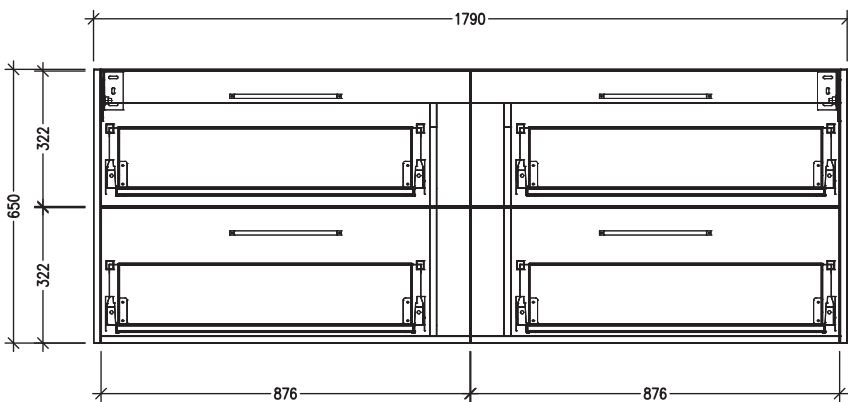
- 4 Drawer Wall Hung
- Cabinet with Handle
- Centre Basin
- Dimensions: H670 x W1800 x D465
- Designed & Assembled in NZ

### Technical Details

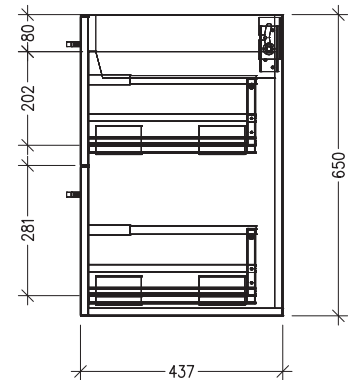
Note: All measurements shown are in millimetres. Sizes are nominal.



TOP VIEW



FRONT VIEW

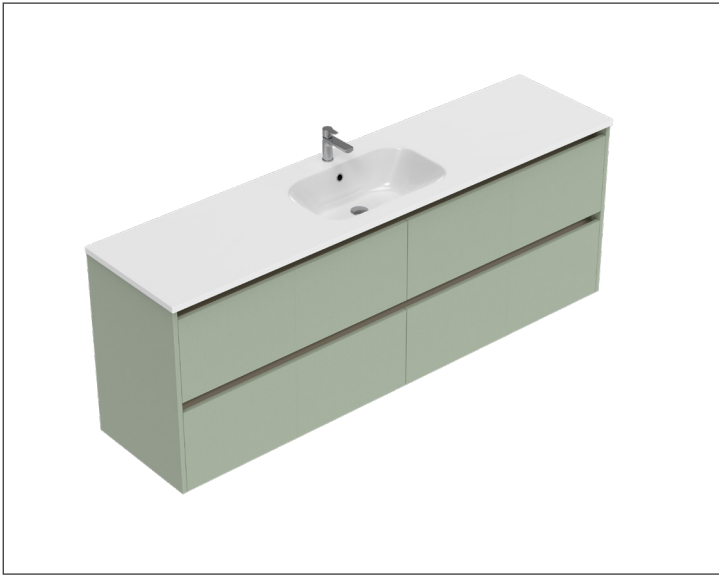


SIDE VIEW

# SPECIFICATION SHEET

## Sahara 1800mm 4 Drawer Wall Vanity

Code: 10266

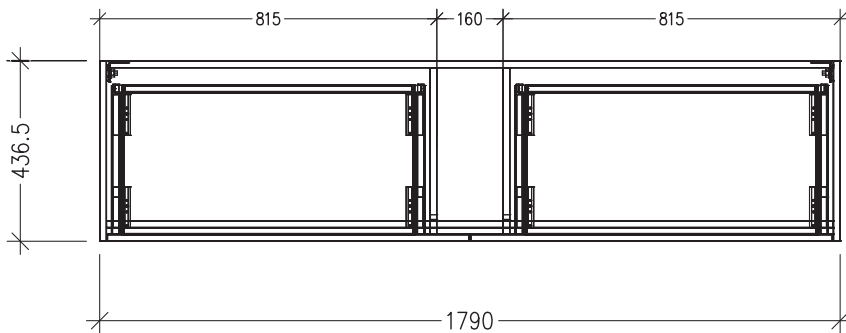


### Features

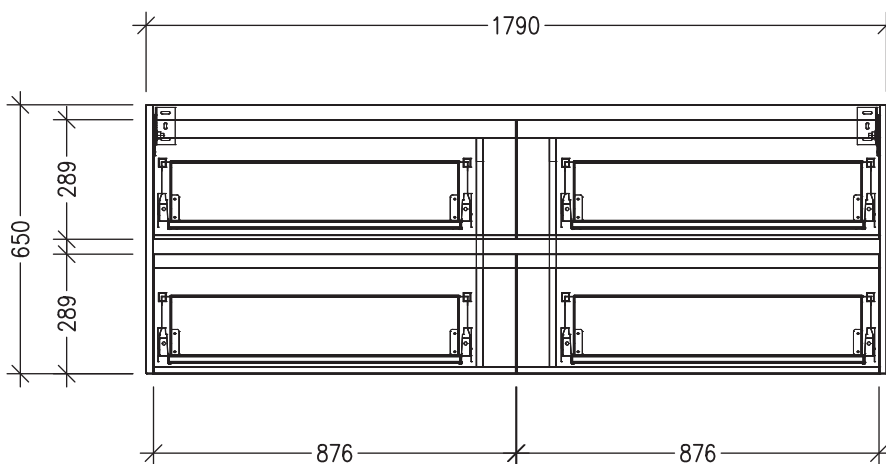
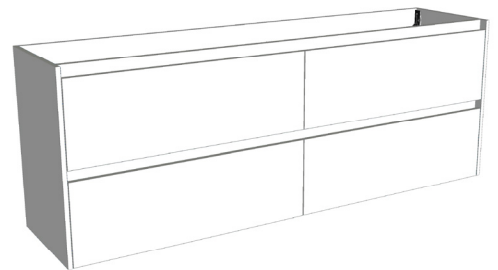
- 4 Drawer Wall Hung
- Cabinet with Negative Detail
- Centre Basin
- Dimensions: H670 x W1800 x D465
- Designed & Assembled in NZ

### Technical Details

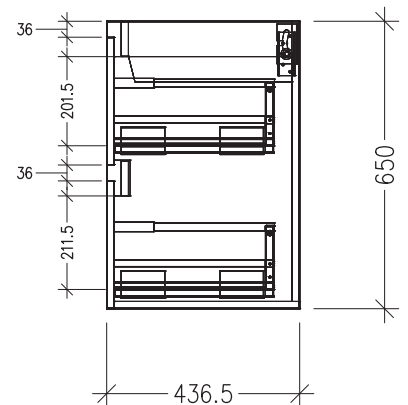
Note: All measurements shown are in millimetres. Sizes are nominal.



TOP VIEW



FRONT VIEW



SIDE VIEW