

# PINNACLE 1500 DB SINGLE DWR WALL VANITY

## PRODUCT SPECIFICATIONS



### CABINET

INSTALLATION	Wall Hung
CONFIGURATION	2 soft-close Drawers
MATERIAL	Moisture Resistant Board
WIDTH (mm)	1490
DEPTH (mm)	452
HEIGHT (mm)	430
ORIGIN	Aotearoa / New Zealand

### VANITY TOP - Double Bowl

FINISH	Gloss White
MATERIAL	Composite
TAP HOLE	Yes
OVERFLOW	Yes
WASTE SIZE	Suits 32mm and 40mm waste traps
WASTE INCLUDED	No
WIDTH (mm)	1500
DEPTH (mm)	460
ORIGIN	PRC
STANDARD APPROVAL	AS/NZS 1730:1996

### PRODUCT CODES & FINISHES



5PIN15DSN01

White Melamine



5PIN15DSN02

Ultra Gloss White -  
Front Panels Only



5PIN15DSN23

Baroque



5PIN15DSN25

Premium Oak



5PIN15DSN30

Hickory Walnut



5PIN15DSN31

Blackened Elm



5PIN15DSN32

Rural Oak



5PIN15DSN82

Nordic Ash



5PIN15DSN93

Charred Oak



5PIN15DSN95

Dark Oak

### NOTES

- 5 year warranty \*
- Cabinets made from moisture resistant board with PUR bonding technology are sustainably sourced from FSC certified NZ Radiata Pine.
- Waste cutout in both drawers.
- Optional - Pop-Up Waste. \*\*

ALL MEASUREMENTS ARE NOMINAL.

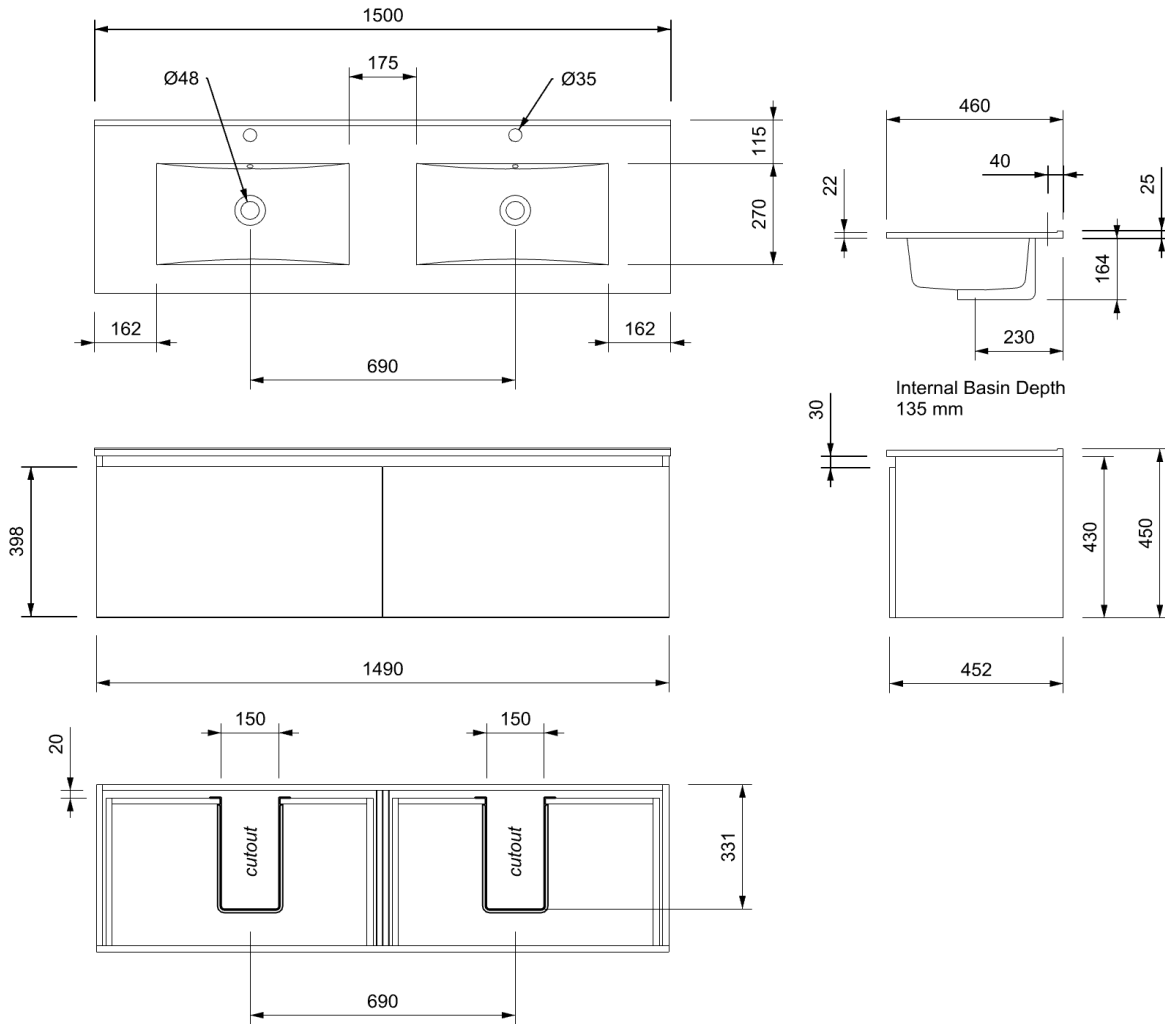
\*WARRANTIES APPLY TO RESIDENTIAL DOMESTIC USE ONLY. WARRANTY VOID IF PRODUCT IS NOT INSTALLED ACCORDING TO OUR SPECIFICATIONS.

\*\*FOR FURTHER INFORMATION ON INSTALLATION GUIDE AND PRODUCT OPTIONS PLEASE REFER TO THE WEBSITE.

CLEARLITE.CO.NZ

# PINNACLE 1500 DB SINGLE DWR WALL VANITY

## TECHNICAL SPECIFICATIONS



ALL MEASUREMENTS ARE NOMINAL.

\*WARRANTIES APPLY TO RESIDENTIAL DOMESTIC USE ONLY. WARRANTY VOID IF PRODUCT IS NOT INSTALLED ACCORDING TO OUR SPECIFICATIONS

\*\*FOR FURTHER INFORMATION ON INSTALLATION GUIDE AND PRODUCT OPTIONS PLEASE REFER TO THE WEBSITE.

[CLEARLITE.CO.NZ](http://CLEARLITE.CO.NZ)