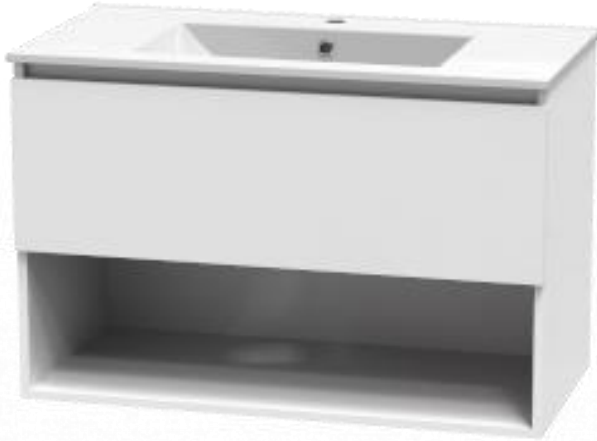


PINNACLE 900 SINGLE DWR OPEN WALL VANITY

PRODUCT SPECIFICATIONS



CABINET

| | |
|---------------|----------------------------------|
| INSTALLATION | Wall Hung |
| CONFIGURATION | 1 soft-close Drawer & Open Shelf |
| MATERIAL | Moisture Resistant Board |
| WIDTH (mm) | 890 |
| DEPTH (mm) | 452 |
| HEIGHT (mm) | 600 |
| ORIGIN | Aotearoa / New Zealand |

VANITY TOP

| | |
|-------------------|---------------------------------|
| FINISH | Gloss White |
| MATERIAL | Vitreous China |
| TAP HOLE | Yes |
| OVERFLOW | Yes |
| WASTE SIZE | Suits 32mm and 40mm waste traps |
| WASTE INCLUDED | No |
| WIDTH (mm) | 900 |
| DEPTH (mm) | 460 |
| ORIGIN | PRC |
| STANDARD APPROVAL | AS/NZS 1730:1996 |

PRODUCT CODES & FINISHES



5PIN090DO01

White Melamine



5PIN090DO02

Ultra Gloss White -
Front Panels Only



5PIN090DO23

Baroque



5PIN090DO25

Premium Oak



5PIN090DO30

Hickory Walnut



5PIN090DO31

Blackened Elm



5PIN090DO32

Rural Oak



5PIN090DO82

Nordic Ash



5PIN090DO93

Charred Oak



5PIN090DO95

Dark Oak

NOTES

- 5 year warranty *
- Cabinets made from moisture resistant board with PUR bonding technology are sustainably sourced from FSC certified NZ Radiata Pine.
- Waste cutout in top drawer only.
- Optional - Pop-Up Waste. **

ALL MEASUREMENTS ARE NOMINAL.

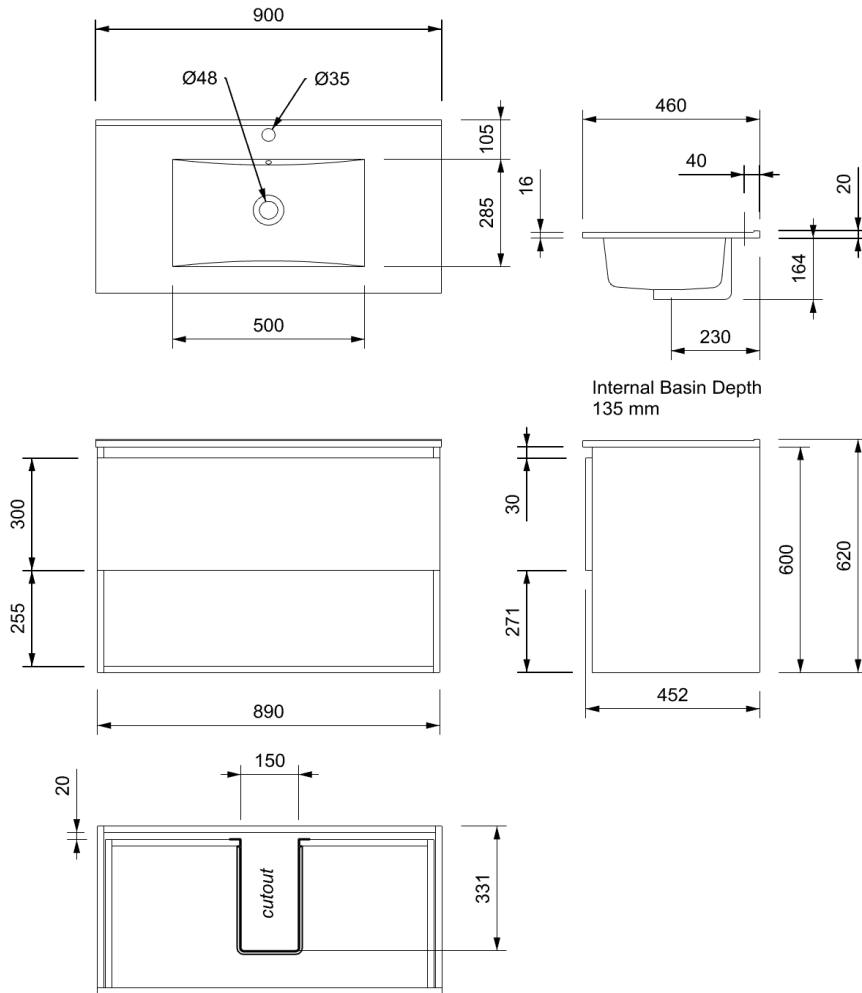
*WARRANTIES APPLY TO RESIDENTIAL DOMESTIC USE ONLY. WARRANTY VOID IF PRODUCT IS NOT INSTALLED ACCORDING TO OUR SPECIFICATIONS.

**FOR FURTHER INFORMATION ON INSTALLATION GUIDE AND PRODUCT OPTIONS PLEASE REFER TO THE WEBSITE.

CLEARLITE.CO.NZ

PINNACLE 900 SINGLE DWR OPEN WALL VANITY

TECHNICAL SPECIFICATIONS



ALL MEASUREMENTS ARE NOMINAL.

*WARRANTIES APPLY TO RESIDENTIAL DOMESTIC USE ONLY. WARRANTY VOID IF PRODUCT IS NOT INSTALLED ACCORDING TO OUR SPECIFICATIONS

**FOR FURTHER INFORMATION ON INSTALLATION GUIDE AND PRODUCT OPTIONS PLEASE REFER TO THE WEBSITE.

CLEARLITE.CO.NZ