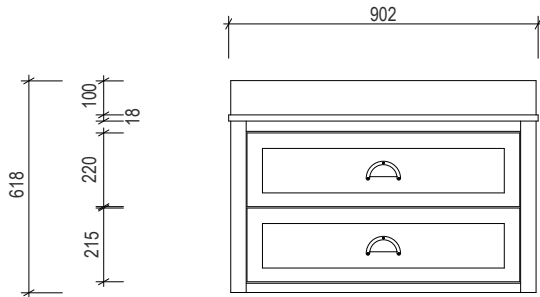
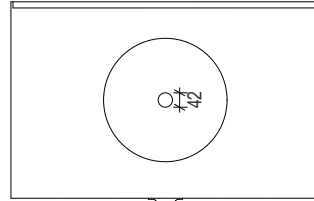


500  
100  
18



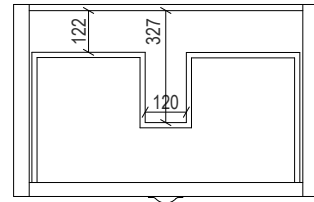
618  
215  
220  
100  
18

902  
270 360 272



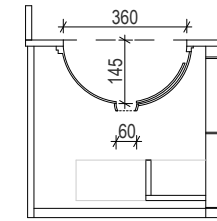
110  
360  
103  
573

888

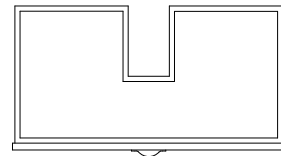


560

573  
560



100  
18  
500



400  
20

795

# AP VANITIES

Bathroom Joinery & Accessories

Name:	Hampton 900
Size :	902 (W) mm x 573 (D) mm x 518 (H) mm
Type:	Wall Hung
Cabinet Material:	Solid Sustainable Plantation Timber
Basin Material:	Ceramic under-mount or top mount basin
Bench Top Finish:	Smartstone options *
Splashback:	Removable splashback (NOT FULLWIDTH SPLASHBACK)
Taphole Options:	No taphole, 1 taphole or 3 tapholes
Vanity Colour Options:	Black, White, South Hampton Grey, Navy

**Note:**  
Mirrors, Wastes and Tapware not included  
Plumbing fixtures must be installed by a qualified plumber (waste not supplied)  
Vanity must be installed by a qualified tradesperson  
Failure to do so may void the warranty  
AP Vanities include a 5 year warranty on cabinets and tapware  
a 12 months warranty on tops and basins and mirrors.

**Caution:**  
Component may be heavy and require two people to lift  
Do not stand or sit on vanity