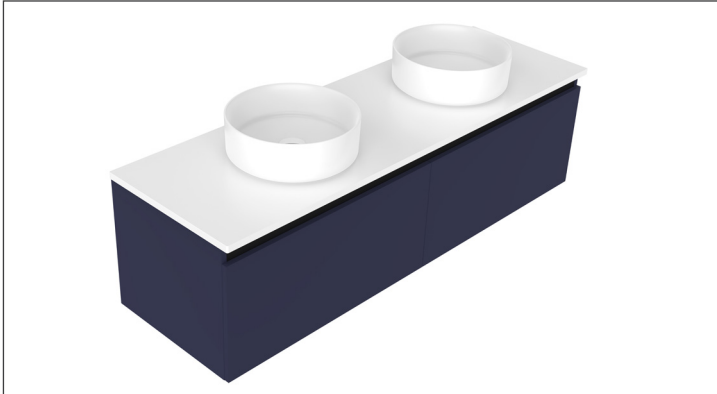


SPECIFICATION SHEET

Oxley Luxe 1500 2-Drawer Double Basin Wall Hung Vanity



Features

- 2-Drawer Wall Hung Vanity - Colour options below
- Full Extension Soft Close Drawers with Extrusions - Extrusion upgrade options available
- Dimensions: H420 x W1500 x D465
- Slab Top Options:
20mm StoneCast Top or Quartz Slab Top

*Note: Vessel basins are purchased separately.
Visit www.newtech.co.nz for the full range of vessel basin options.*

Cabinet Options



Seafoam
4474SF

Iceberg
4474IB

Snow White
4474SW

Cherry Blossom
4474CB

Slate Grey
4474SG

Dusk Grey
4474DK

Indigo
4474IN

Matte Black
4474MB

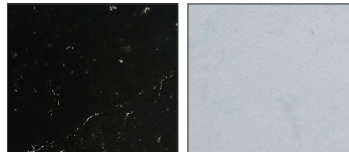
StoneCast Slab Top Options



Gloss White
SC

Matte White
SCMW

Quartz Slab Top Options



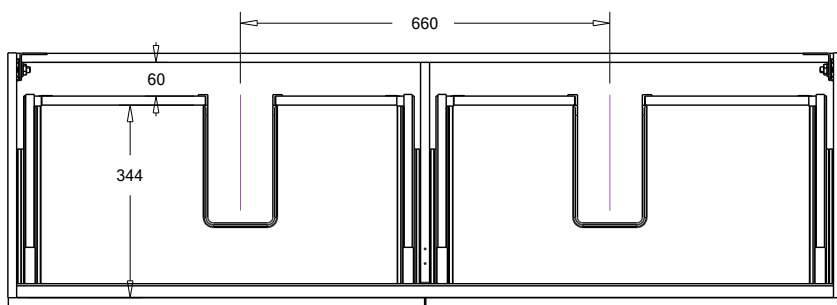
Midnight Stone
MS

Himalaya
HY

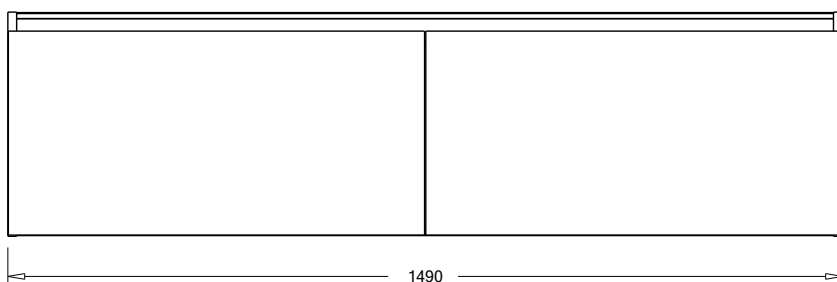
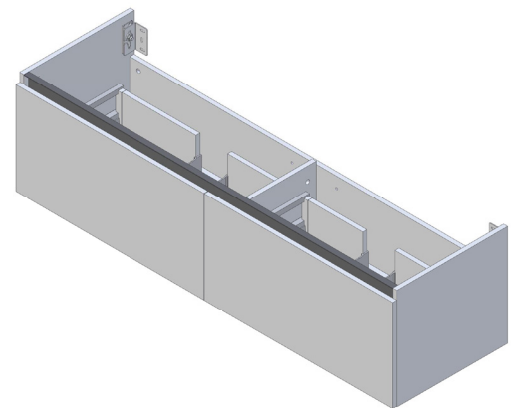
Note: To order a Slab Top, add the Slab Top code to the cabinet code

Technical Details

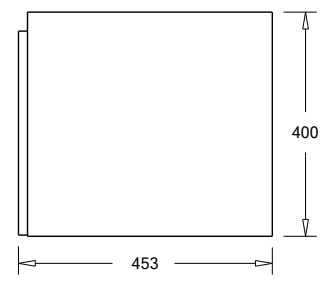
Note: All measurements shown are in millimetres. Sizes are nominal.



TOP VIEW



FRONT VIEW



SIDE VIEW