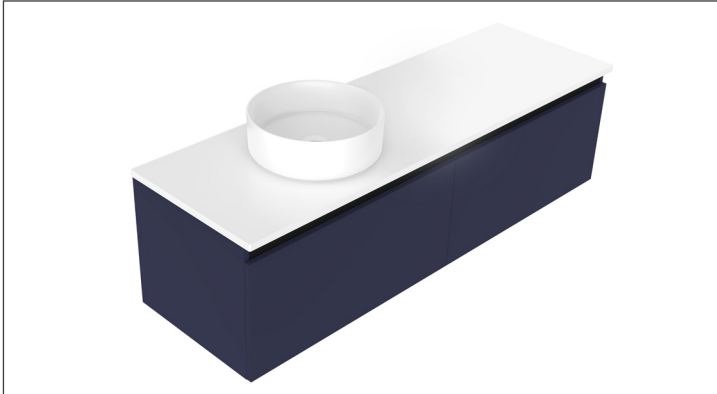


# SPECIFICATION SHEET

## Oxley Luxe 1500 2-Drawer Left Offset Basin Wall Hung Vanity



### Features

- 2-Drawer Wall Hung Vanity - Colour options below
- Full Extension Soft Close Drawers with Extrusions - Extrusion upgrade options available
- Dimensions: H420 x W1500 x D465
- Slab Top Options:  
20mm StoneCast Top or Quartz Slab Top

*Note: Vessel basins are purchased separately.  
Visit [www.newtech.co.nz](http://www.newtech.co.nz) for the full range of vessel basin options.*

### Cabinet Options



Seafoam  
4472LSF

Iceberg  
4472LIB

Snow White  
4472LSW

Cherry Blossom  
4472LCB

Slate Grey  
4472LSG

Dusk Grey  
4472LDK

Indigo  
4472LIN

Matte Black  
4472LMB

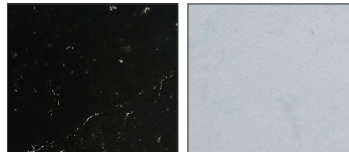
### StoneCast Slab Top Options



Gloss White  
SC

Matte White  
SCMW

### Quartz Slab Top Options



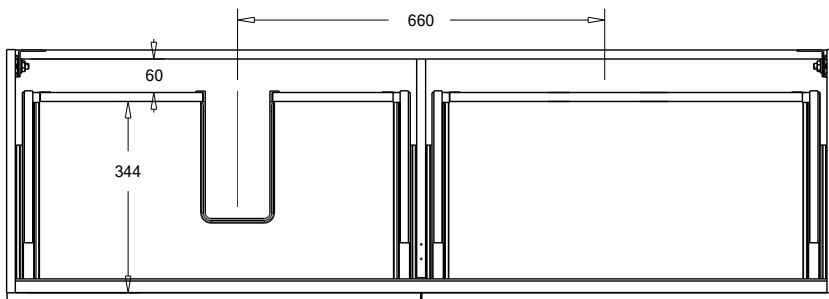
Midnight Stone  
MS

Himalaya  
HY

*Note: To order a Slab Top, add the Slab Top code to the cabinet code*

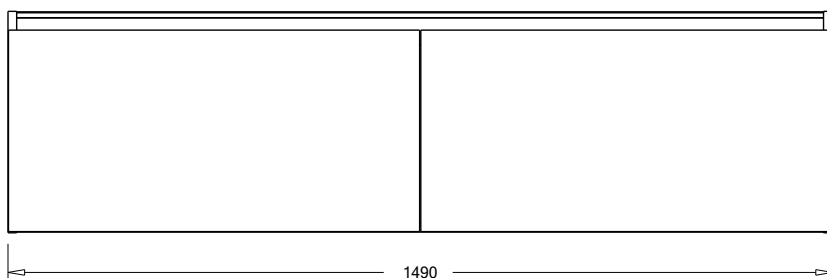
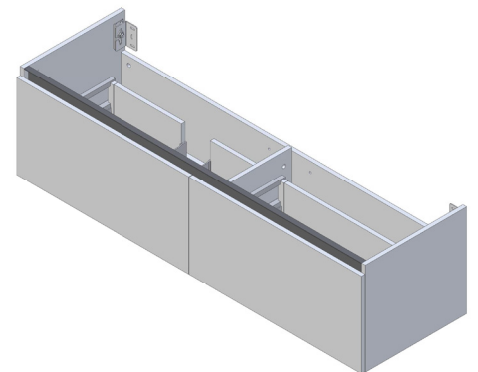
### Technical Details

*Note: All measurements shown are in millimetres. Sizes are nominal.*

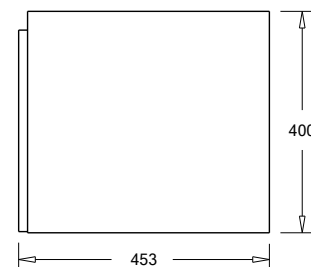


*Note: Full Drawer Box on Right Hand Side*

TOP VIEW



FRONT VIEW



SIDE VIEW