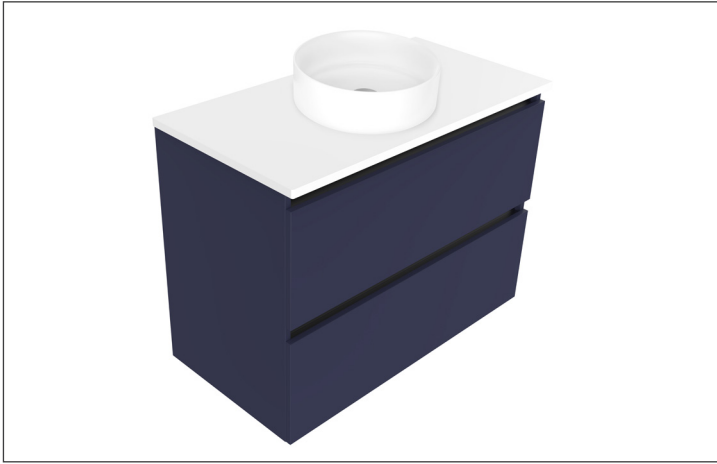


# SPECIFICATION SHEET

## Oxley Luxe 900 2-Drawer Wall Hung Vanity

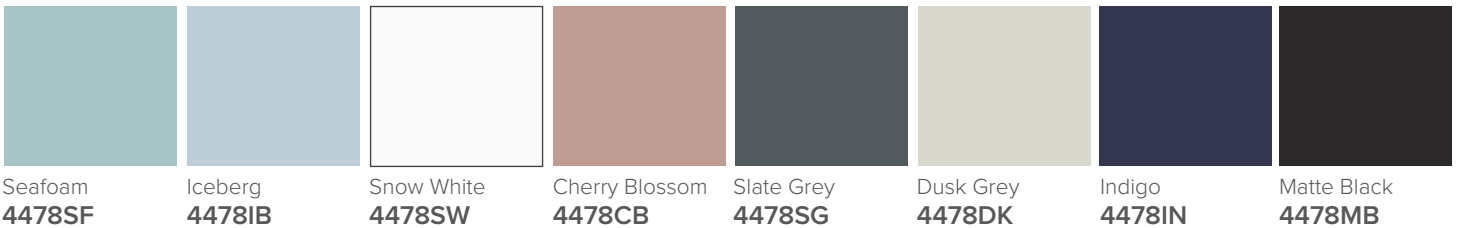


### Features

- 2-Drawer Wall Hung Vanity - Colour options below
- Full Extension Soft Close Drawers with Extrusions - Extrusion upgrade options available
- Dimensions: H670 x W900 x D465
- Slab Top Options:  
20mm StoneCast Top or Quartz Slab Top

*Note: Vessel basins are purchased separately.  
Visit [www.newtech.co.nz](http://www.newtech.co.nz) for the full range of vessel basin options.*

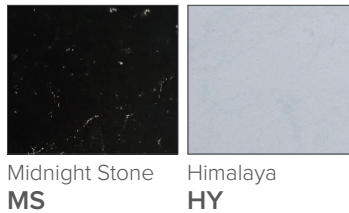
### Cabinet Options



### StoneCast Slab Top Options



### Quartz Slab Top Options



*Note: To order a Slab Top, add the Slab Top code to the cabinet code*

### Technical Details

*Note: All measurements shown are in millimetres. Sizes are nominal.*

