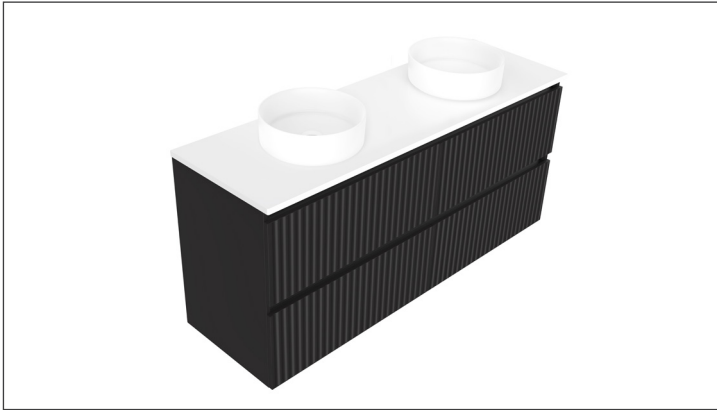


SPECIFICATION SHEET

Porscha Luxe 1500 4-Drawer Double Basin Wall Hung Vanity

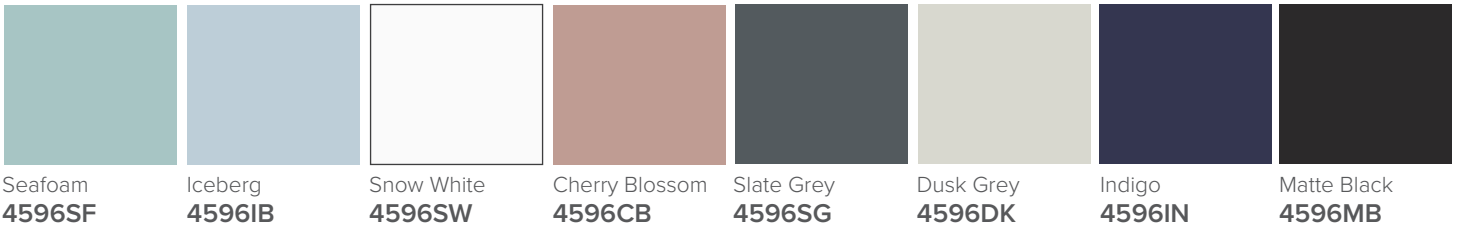


Features

- 4-Drawer Wall Hung Vanity - Colour options below
- Full Extension Soft Close Drawers with Extrusions - Extrusion upgrade options available
- Designer Drawer Fronts - Four Drawer Front options
- Dimensions: H670 x W1500 x D465
- Slab Top Options:
20mm StoneCast Top or Quartz Slab Top

*Note: Vessel basins are purchased separately.
Visit www.newtech.co.nz for the full range of vessel basin options.*

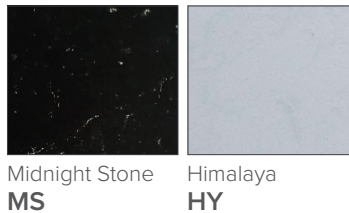
Cabinet Options



StoneCast Slab Top Options



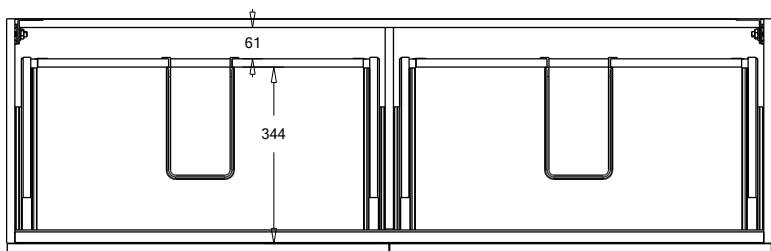
Quartz Slab Top Options



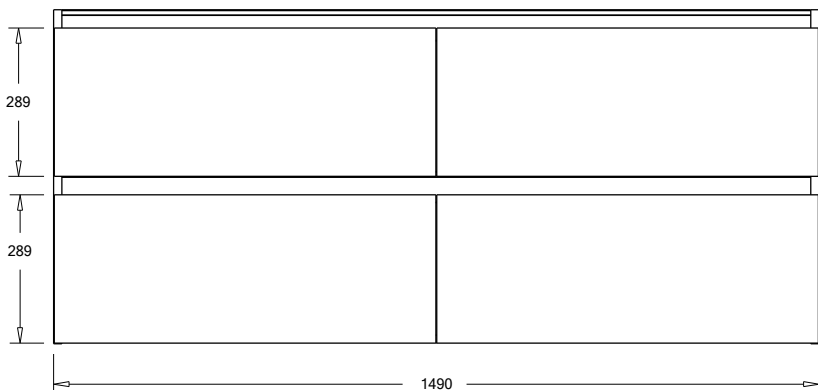
Note: To order a Slab Top, add the Slab Top code to the cabinet code

Technical Details

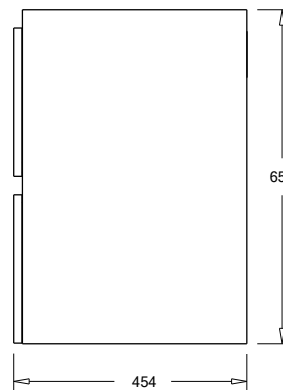
Note: All measurements shown are in millimetres. Sizes are nominal.



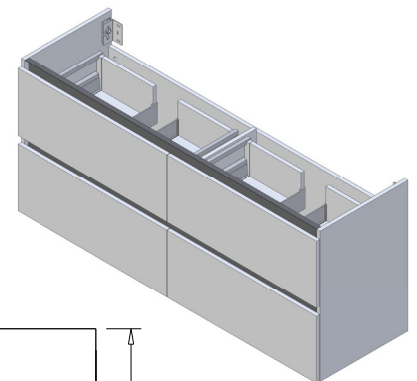
TOP VIEW



FRONT VIEW



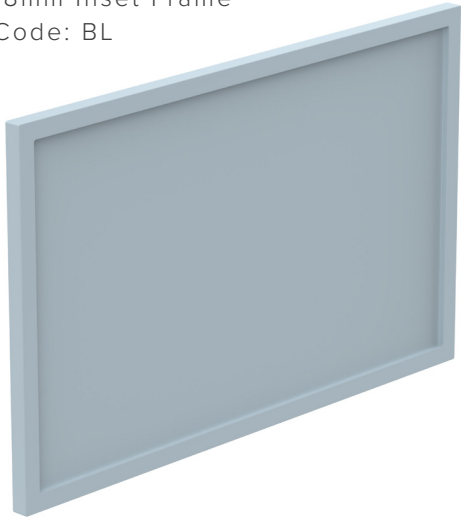
SIDE VIEW



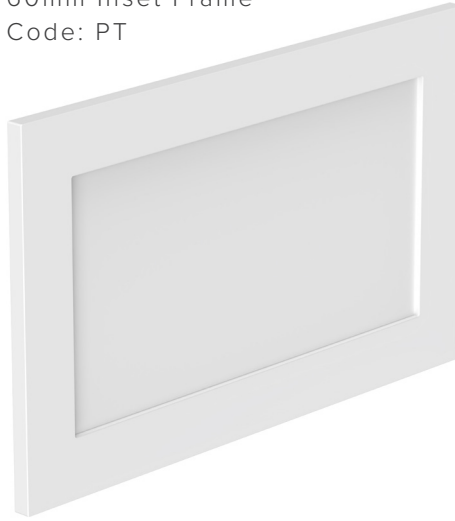
SPECIFICATION SHEET

Porscha Designer Drawer Fronts

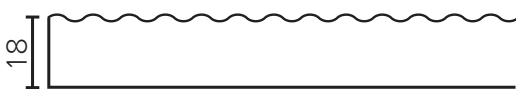
BARNSLEY
18mm Inset Frame
Code: BL



PRESTON
60mm Inset Frame
Code: PT



TURNBERRY
Ripple Design Panel
Code: TB



NEWPORT
V-Groove Panels
Code: NP



Seafoam



Iceberg



Snow White



Cherry Blossom



Slate Grey



Dusk Grey



Indigo



Matte Black