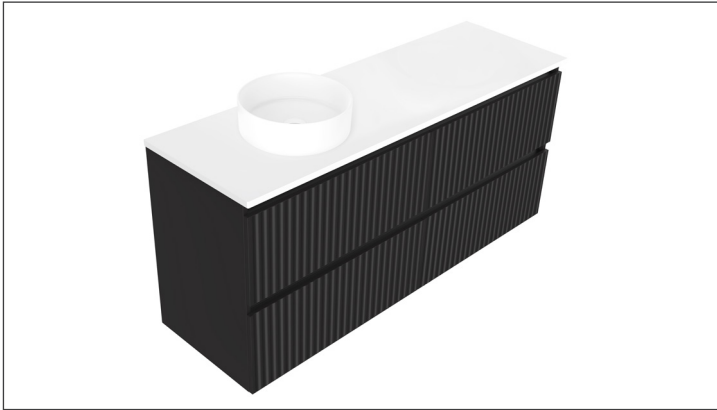


SPECIFICATION SHEET

Porscha Luxe 1500 4-Drawer Left Offset Basin Wall Hung Vanity



Features

- 4-Drawer Wall Hung Vanity - *Colour options below*
- Full Extension Soft Close Drawers with Extrusions - *Extrusion upgrade options available*
- Designer Drawer Fronts - *Four Drawer Front options*
- Dimensions: H670 x W1500 x D465
- Slab Top Options:
20mm StoneCast Top or Quartz Slab Top

*Note: Vessel basins are purchased separately.
Visit www.newtech.co.nz for the full range of vessel basin options.*

Cabinet Options



Seafoam
4594LSF

Iceberg
4594LIB

Snow White
4594LSW

Cherry Blossom
4594LCB

Slate Grey
4594LSG

Dusk Grey
4594LDK

Indigo
4594LIN

Matte Black
4594LMB

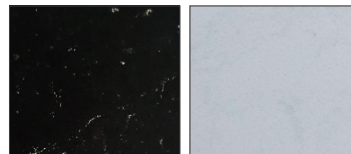
StoneCast Slab Top Options



Gloss White
SC

Matte White
SCMW

Quartz Slab Top Options



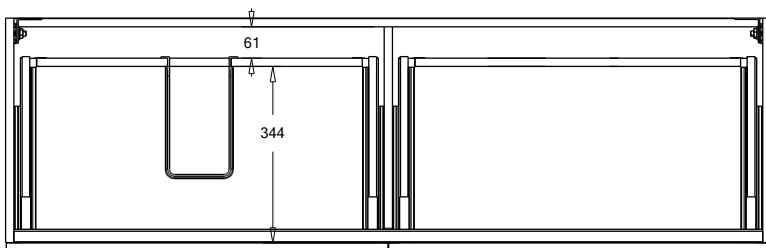
Midnight Stone
MS

Himalaya
HY

Note: To order a Slab Top, add the Slab Top code to the cabinet code

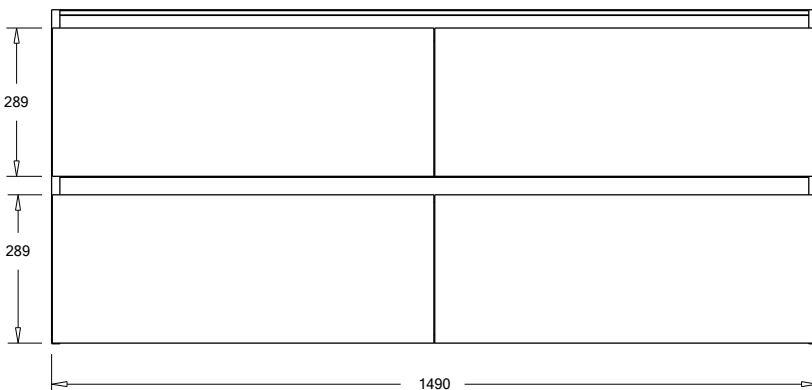
Technical Details

Note: All measurements shown are in millimetres. Sizes are nominal.

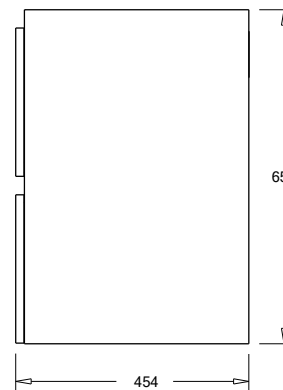


Note: Full Drawer Box on Right Hand Side

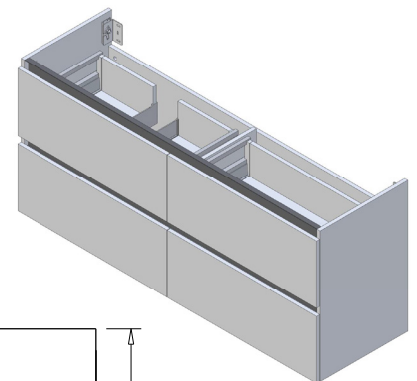
TOP VIEW



FRONT VIEW



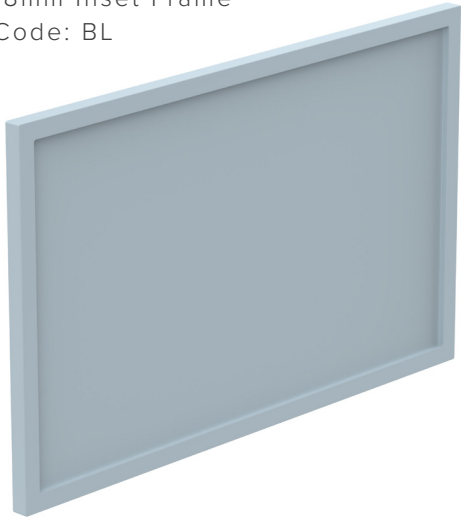
SIDE VIEW



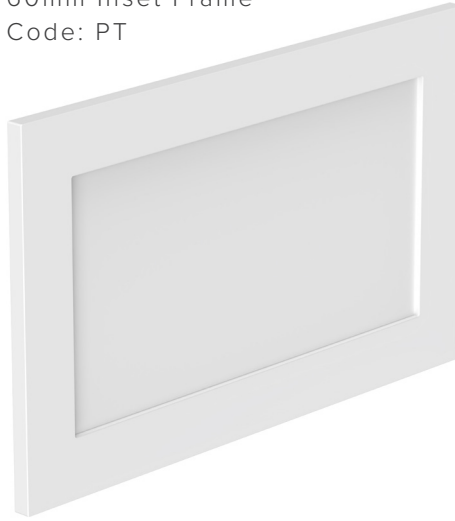
SPECIFICATION SHEET

Porscha Designer Drawer Fronts

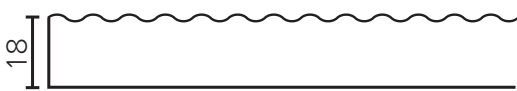
BARNSLEY
18mm Inset Frame
Code: BL



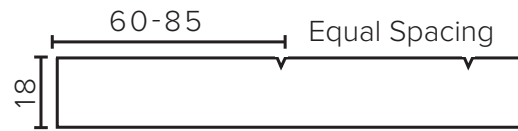
PRESTON
60mm Inset Frame
Code: PT



TURNBERRY
Ripple Design Panel
Code: TB



NEWPORT
V-Groove Panels
Code: NP



Seafoam



Iceberg



Snow White



Cherry Blossom



Slate Grey



Dusk Grey



Indigo



Matte Black