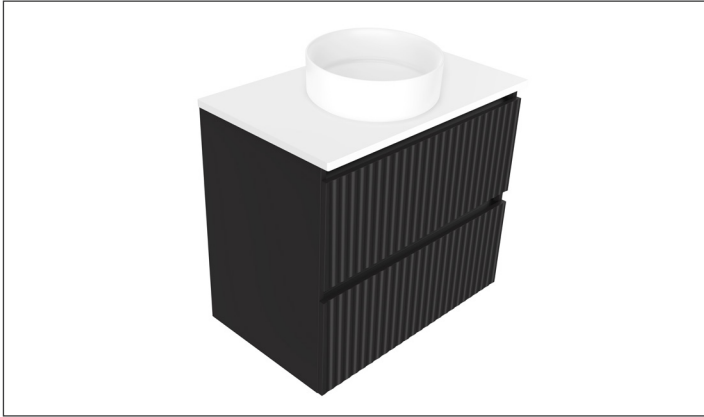


# SPECIFICATION SHEET

## Porscha Luxe 750 2-Drawer Wall Hung Vanity



### Features

- 2-Drawer Wall Hung Vanity - *Colour options below*
- Full Extension Soft Close Drawers with Extrusions - *Extrusion upgrade options available*
- Designer Drawer Fronts - *Four Drawer Front options*
- Dimensions: H670 x W750 x D465
- Slab Top Options:  
20mm StoneCast Top or Quartz Slab Top

*Note: Vessel basins are purchased separately.  
Visit [www.newtech.co.nz](http://www.newtech.co.nz) for the full range of vessel basin options.*

### Cabinet Options



Seafoam  
4582SF

Iceberg  
4582IB

Snow White  
4582SW

Cherry Blossom  
4582CB

Slate Grey  
4582SG

Dusk Grey  
4582DK

Indigo  
4582IN

Matte Black  
4582MB

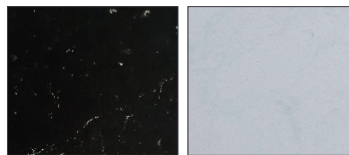
### StoneCast Slab Top Options



Gloss White  
SC

Matte White  
SCMW

### Quartz Slab Top Options



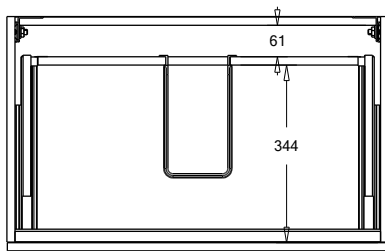
Midnight Stone  
MS

Himalaya  
HY

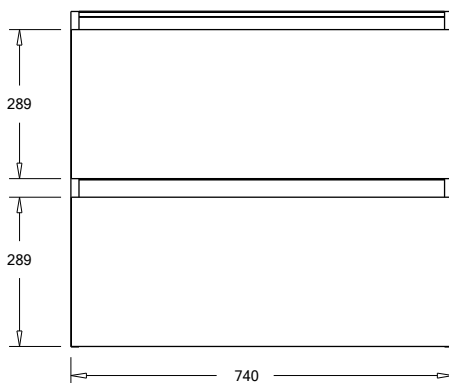
*Note: To order a Slab Top, add the Slab Top code to the cabinet code*

### Technical Details

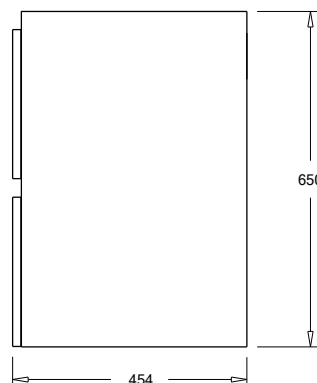
*Note: All measurements shown are in millimetres. Sizes are nominal.*



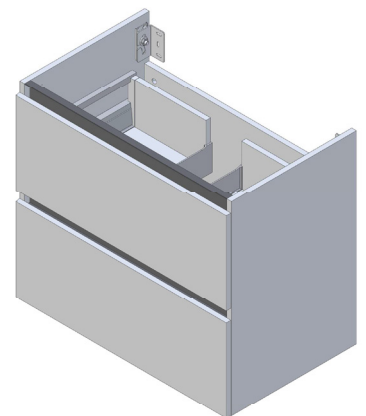
TOP VIEW



FRONT VIEW



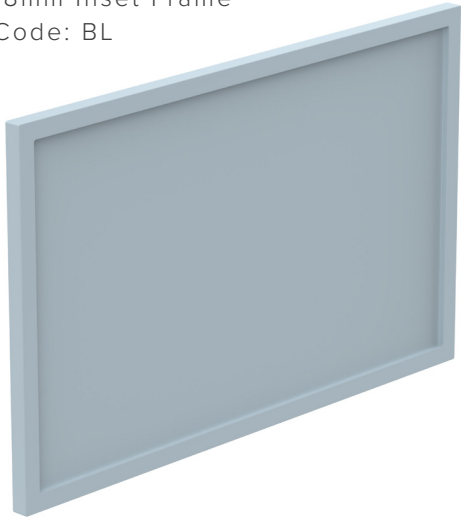
SIDE VIEW



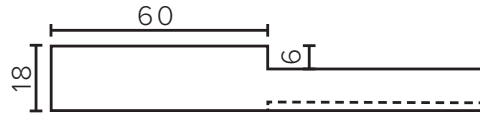
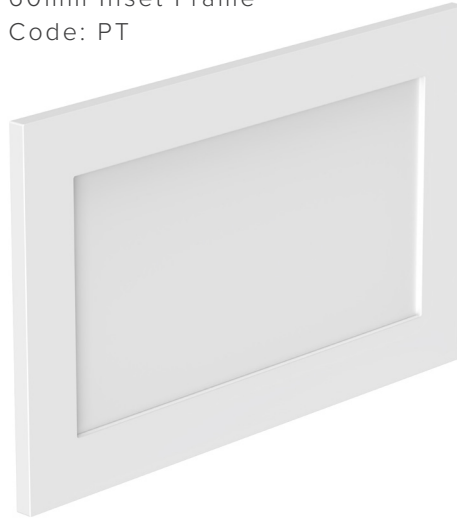
# SPECIFICATION SHEET

## Porscha Designer Drawer Fronts

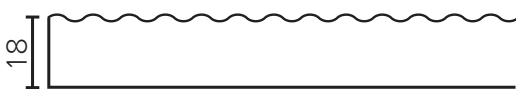
**BARNSLEY**  
18mm Inset Frame  
Code: BL



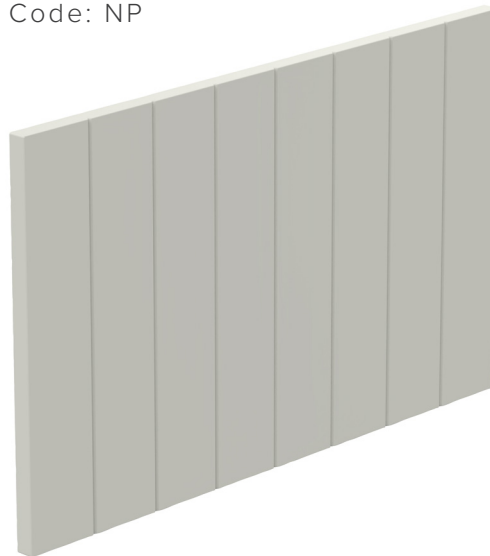
**PRESTON**  
60mm Inset Frame  
Code: PT



**TURNBERRY**  
Ripple Design Panel  
Code: TB



**NEWPORT**  
V-Groove Panels  
Code: NP



Seafoam



Iceberg



Snow White



Cherry Blossom



Slate Grey



Dusk Grey



Indigo



Matte Black