

SPECIFICATION SHEET

Vega 1200mm 4 Drawer Single Basin Wall Vanity

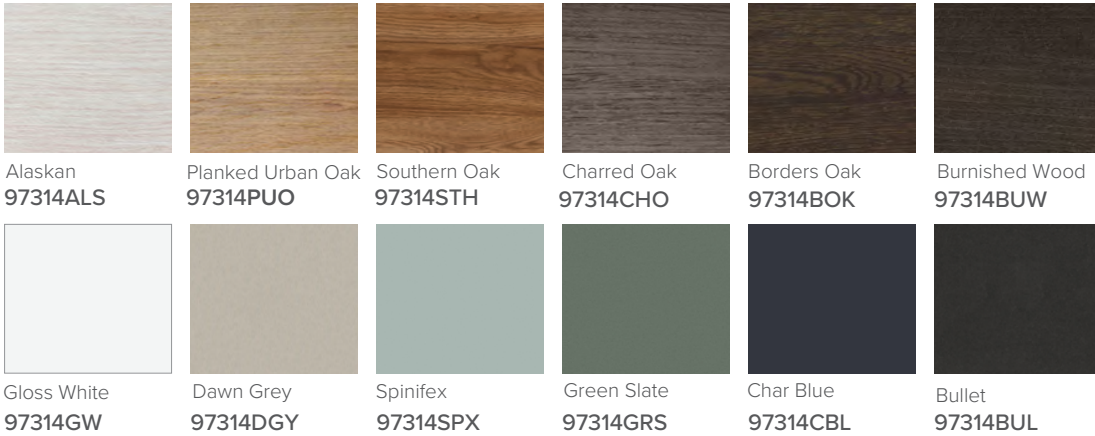


Features

- Wall Hung
- Full Extension Soft Close Drawers
- Negative detail finger pull with extrusion
- Cabinet:
Laminate Woodgrain & Solid Colours on MR Board
- Slab Top Options:
20mm Quartz Top
20mm StoneCast Top
- Dimensions: H670 x W1200 x D465

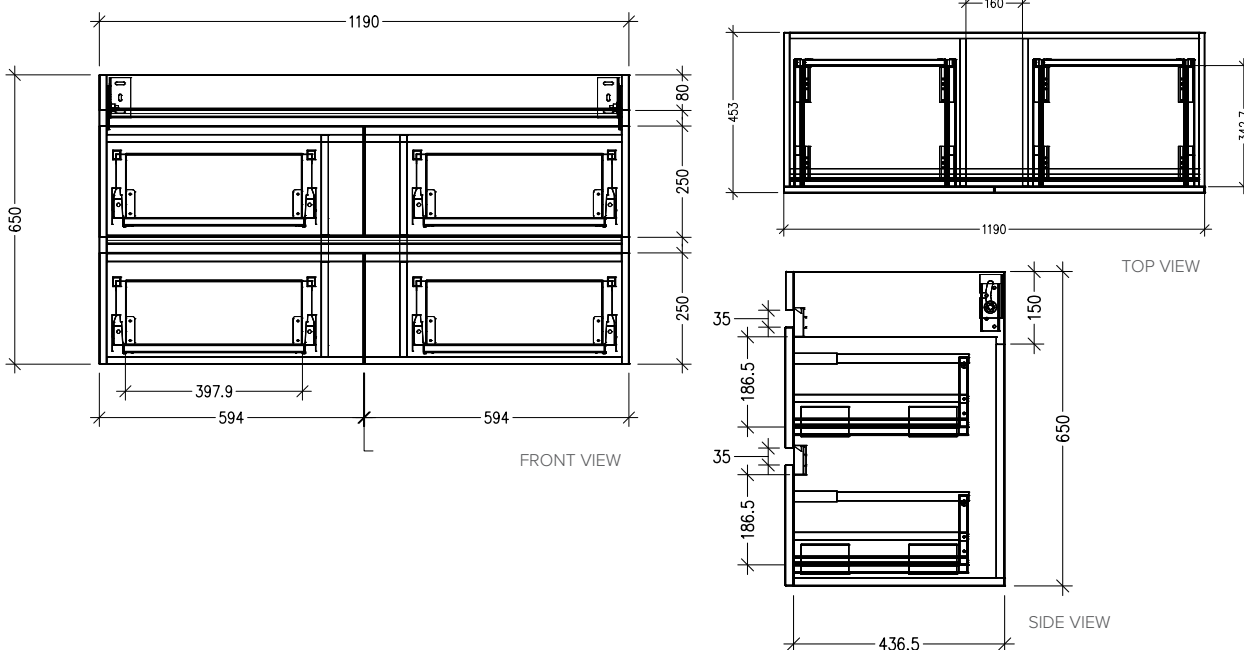
*Note: Vessel basins are purchased separately.
Visit www.newtech.co.nz for full range of vessel basin options.*

Colour Options with Code



Technical Details

Note: All measurements shown are in millimetres. Sizes are nominal.



SPECIFICATION SHEET

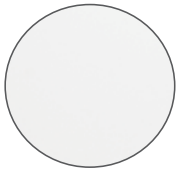
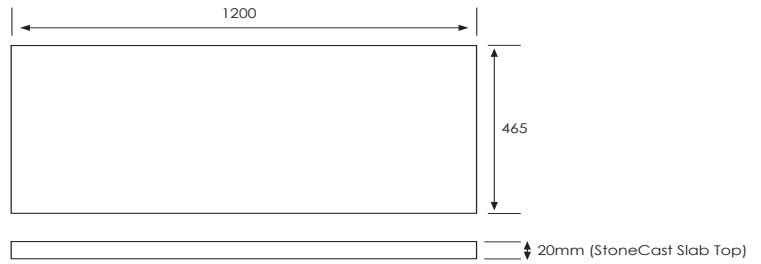
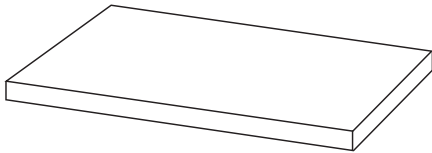
Slab Top Options

StoneCast Slab Top 1200

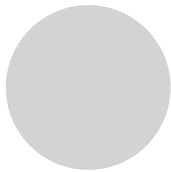
W1200 x D465 x H20

Gloss White - SC

Matte White - SCMW



Gloss White



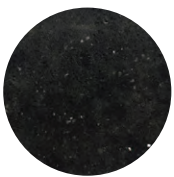
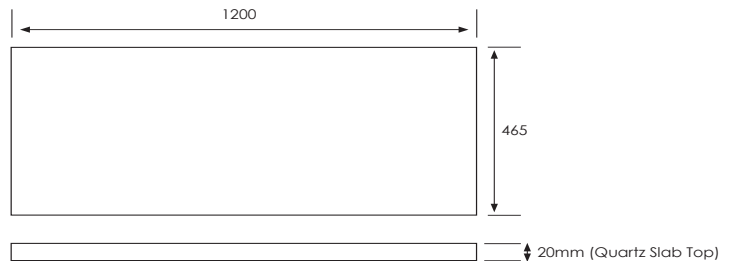
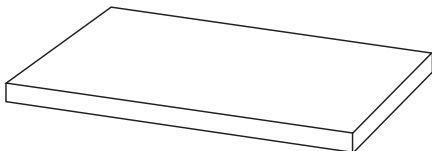
Matte White

Quartz Slab Top 1200

W1200 x D465 x H20

Midnight Stone - MS

Himalaya - HY



Midnight Stone



Himalaya

Tap Hole Position

Tap hole position must be specified

- NTH** No Tap Holes
- CTH** Centre Tap Holes
- LTH** Left Tap Holes
- RTH** Right Tap Holes
- ITH*** Inside Tap Holes
- OTH*** Outside Tap Holes

*only applicable with double basins