

# SPECIFICATION SHEET

## Vega 1500mm 4 Drawer Single Basin Floor Vanity

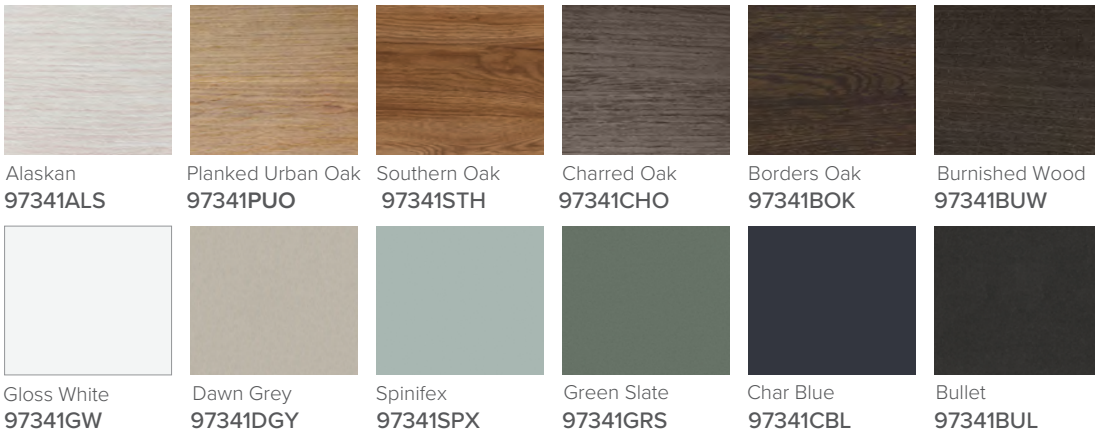


### Features

- Floorstanding
- Full Extension Soft Close Drawers
- Negative detail finger pull with extrusion
- Cabinet: Laminate Woodgrain & Solid Colours on MR Board
- Slab Top Options: 20mm Quartz Top or StoneCast Top
- Dimensions: H820 x W1500 x D465
- Floor plumbing provision has been allowed for with a 60mm space behind lower drawer. Note lower drawer DO NOT have a plumbing cutout and are designed to offer full storage space.
- **Optional: Floor plumbing waste provision in bottom drawer [88515] - Additional \$75 RRP**

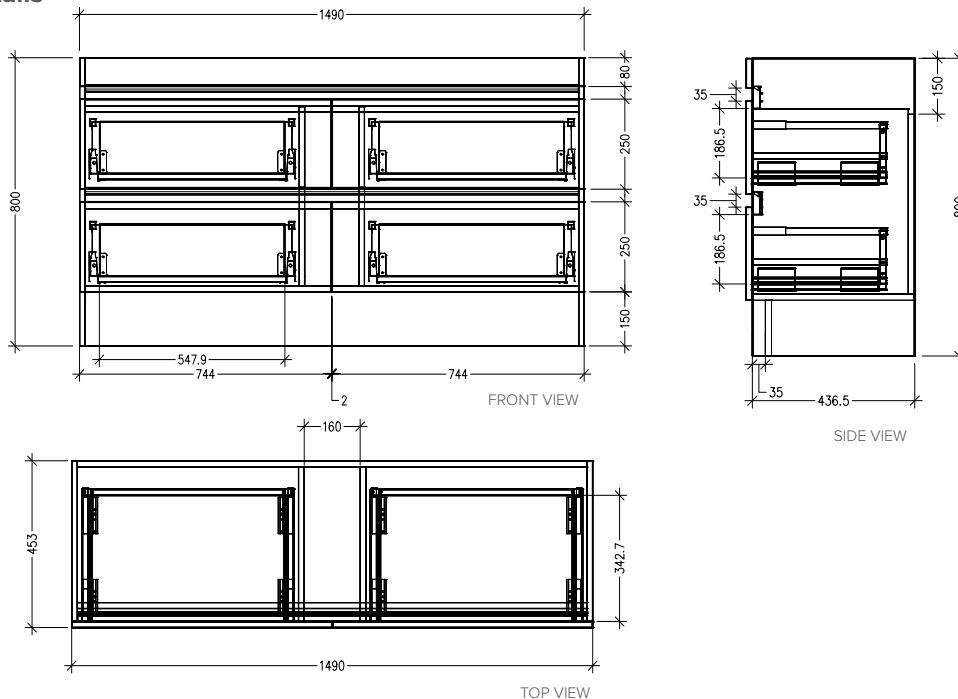
*Note: Vessel basins are purchased separately.  
Visit [www.newtech.co.nz](http://www.newtech.co.nz) for full range of vessel basin options.*

### Colour Options with Code



### Technical Details

*Note: All measurements shown are in millimetres. Sizes are nominal.*



# SPECIFICATION SHEET

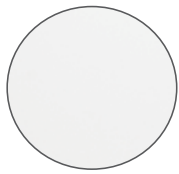
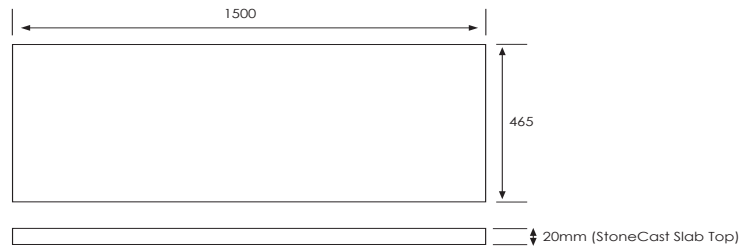
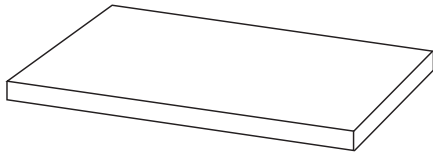
## Slab Top Options

### StoneCast Slab Top 1500

W1500 x D465 x H20

Gloss White - SC

Matte White - SCMW



Gloss White



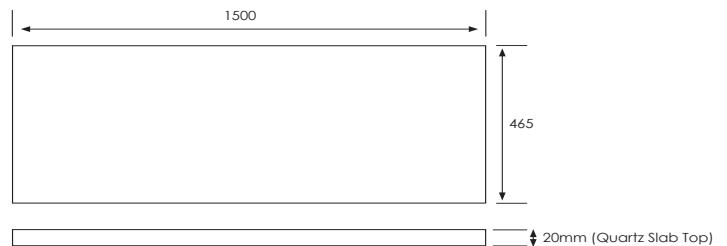
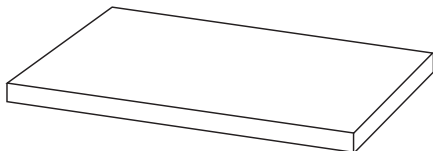
Matte White

### Quartz Slab Top 1500

W1500 x D465 x H20

Midnight Stone - MS

Himalaya - HY



Midnight Stone



Himalaya

### Tap Hole Position

Tap hole position must be specified

<b>NTH</b>	No Tap Holes
<b>CTH</b>	Centre Tap Holes
<b>LTH</b>	Left Tap Holes
<b>RTH</b>	Right Tap Holes
<b>ITH*</b>	Inside Tap Holes
<b>OTH*</b>	Outside Tap Holes

\*only applicable with double basins