

SPECIFICATION SHEET

1500 Vega Wall Hung Single Basin Vanity 4 Drawer

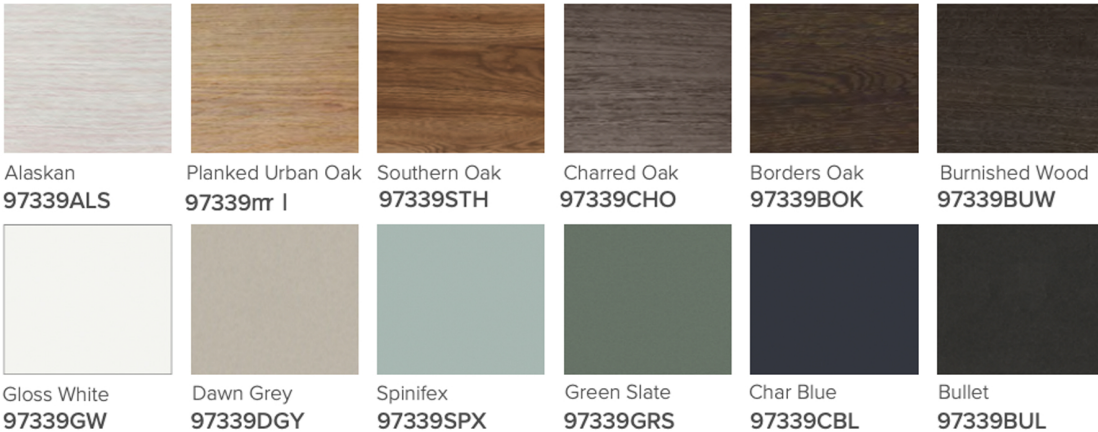


Features

- Wall Hung
- Full Extension Soft Close Drawers
- Negative detail finger pull with extrusion
- Cabinet:
Laminate Woodgrain & Solid Colours on MR Board
- Slab Top Options:
20mm Quartz Top or StoneCast Top
- Dimensions: H670 x W1500 x D465

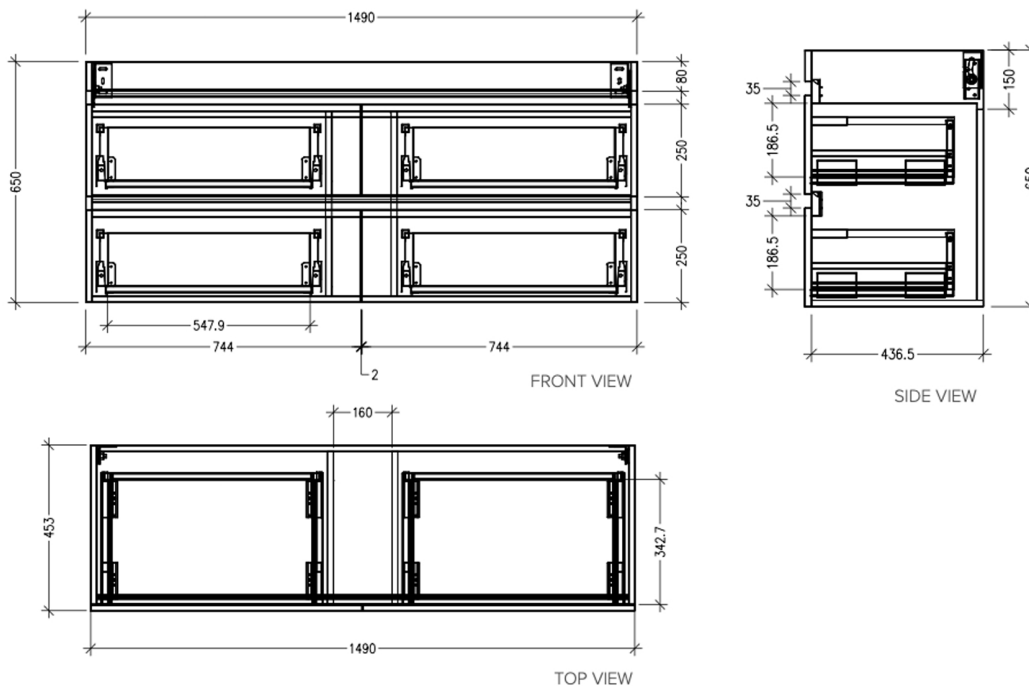
*Note: Vessel basins are purchased separately.
Visit www.newtech.co.nz for full range of vessel basin options.*

Colour Options with Code



Technical Details

Note: All measurements shown are in millimetres. Sizes are nominal.



SPECIFICATION SHEET

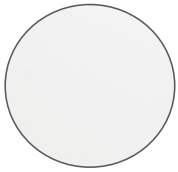
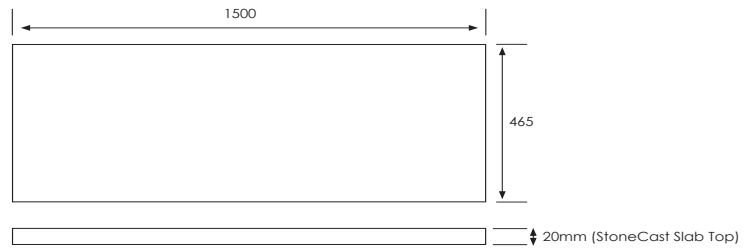
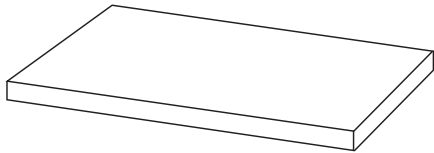
Slab Top Options

StoneCast Slab Top 1500

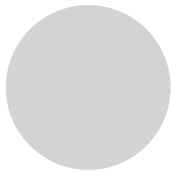
W1500 x D465 x H20

Gloss White - SC

Matte White - SCMW



Gloss White



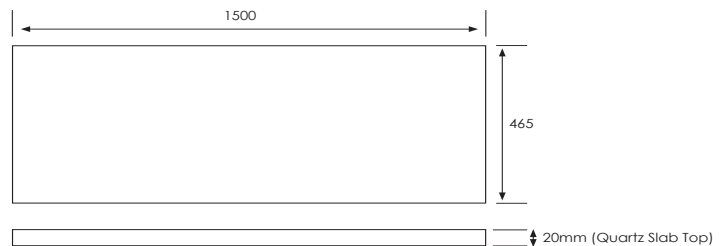
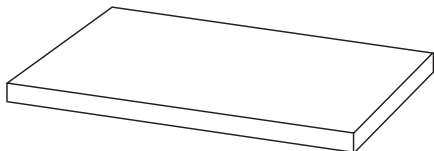
Matte White

Quartz Slab Top 1500

W1500 x D465 x H20

Midnight Stone - MS

Himalaya - HY



Midnight Stone



Himalaya

Tap Hole Position

Tap hole position must be specified

NTH	No Tap Holes
CTH	Centre Tap Holes
LTH	Left Tap Holes
RTH	Right Tap Holes
ITH*	Inside Tap Holes
OTH*	Outside Tap Holes

*only applicable with double basins